

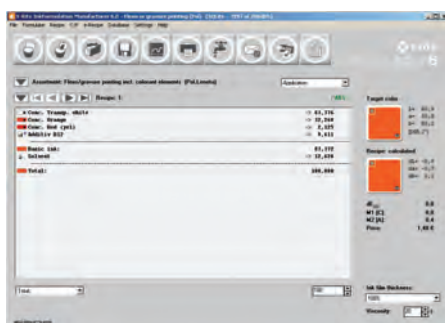
Using a spectrophotometer and new software from X-Rite geared specifically for ink formulations, one company was able to halve its stock of leftover inks in only a few months by remixing inks to fit specific new jobs.

—Andrej Repar TECHNICAL DIRECTOR, SUN CHEMICAL



▲ PICTURED: InkFormulation Software provides a fast, accurate and consistent ink formulation, formula creation, storage, approval and retrieval solution.

## InkFormulation Software



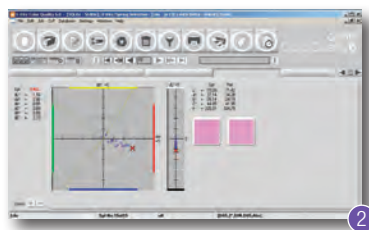
### Fast, accurate, consistent ink formulation

Color quality and consistency are table stakes for printers and packaging converters in today's highly competitive marketplace. And most companies have put in place operating procedures designed to deliver just that. But what about the ink room? If there are problems with the ink – incoming materials are faulty or accurate formulations are not achieved – the rest of the downstream process suffers. Too often, this aspect of quality control is overlooked, and/or ink formulation processes are complex and time-consuming, requiring special colorist talent and a lot of luck.

X-Rite InkFormulation Software addresses these issues for ink manufacturers, printers and packaging converters alike. InkFormulation Software is part of an end-to-end color workflow that gives ink suppliers, printers and packaging converters flexibility and control over recipes and assortments, improves basic material handling, simplifies definition of the right ink film thickness and helps reduce hazardous waste. It also makes it easier to use leftover inks and press returns, reducing overall ink inventories. InkFormulation is available in four configurations including an online version, Basic and Professional for printers, and a version for Ink Manufacturers.

### Key Benefits

- Formulate inks for accurate color taking the substrate color into account, right the first time, right every time.
- Save significant time in reformulation of existing inks by using existing assortments and recipes.
- More accurately quote ink costs on jobs with InkFormulation's MIS/ERP integration, and benefit from better tracking of actual ink usage.
- Improve overall quality and efficiency by linking InkFormulation Software with quality control/statistical process control solutions such as Color iQC and ColorCert.
- Use spectral data from leftover inks to create a recipe of a new target color, using waste inks and new inks to achieve the desired color.
- InkFormulation software is fully XRGB compatible.



- ① A sophisticated math engine provides better prediction of ink interactivity with substrates
- ② ColorQuality included in specific packages

## You might also like...

### eXact Scan

Next generation handheld color measurement solution for understanding, controlling, managing and communicating color across the entire color workflow, avoiding reprints and rework.

### PantoneLIVE

PantoneLIVE is a cloud-based solution that enables the universal PANTONE Color language to be accurately communicated across the entire packaging workflow - from design concept to retail store shelves.

### ColorCert

ColorCert is a modular job-based color workflow suite that enables real-time statistical process control and performance reporting to improve color quality and reduce waste.

## Service Support & Warranty

Drawing on our extensive color expertise, X-Rite offers the right level of services on-site, online or on the phone, to support and nurture your business. For additional protection beyond the one-year warranty, take advantage of our extended warranty program. With global full service contracts, you can ensure your devices are well maintained through X-Rite's Annual Five Point Checkup, uniquely developed to keep devices performing to original specifications. With twelve global service centers, we make it easy to reach us. For more information about extended support options, visit [www.xrite.com/extended-warranties-services](http://www.xrite.com/extended-warranties-services)

## Specifications

### InkFormulation

Recommended System Requirements	Core 2 Duo 2GHZ, Windows XP SP2, Windows Vista, Windows 7, Windows 8, 2 GB RAM, 100 GB of hard-disk space, Screen resolution of 1280 x 1024, USB Port
Supported Devices*	X-Rite eXact / eXact Scan, X-Rite Ci4200 / Ci4200 UV, X-Rite Ci52 / Ci62 / Ci64 / Ci64 UV, X-Rite Ci7600 / Ci7800, X-Rite 530, X-Rite 962 / 964 / 939, Color i5 / Color i7, X-Rite SP62 / SP64, ER 50
Available Digital Libraries	PANTONE® PLUS SERIES (Coated, Uncoated), PANTONE MATCHING SYSTEM® (Coated, Uncoated, Matte) for No-Filter, Pol-Filter, D65 and UVcut, and also the HKS libraries (K,N,Z,E).
Available Configurations*	PrinterBasic, PrinterPro, Manufacturer, and Online

\* Refer to [xrite.com](http://xrite.com) for full list of supported devices and configurations

Full list of specifications available at [www.xrite.com/inkformulation-software/specifications](http://www.xrite.com/inkformulation-software/specifications)