

宏益染液滴定機 - CADS MG 系列

Copower Automatic Dispensing System-CADS MG series

集合有管路及無管路之優點，提供您快速、準確、再現性高之滴定機。
Combination tubed and tubeless laboratory dispenser, to ensure the fastest possible speed of dispensing and good repetition.

- 新型無管路滴液，無管路保養之慮。
New tubeless valve, high throughput, low maintenance.
- 轉盤式滴液，滴定速度快。
Turn-table design, high speed dispensing.
- 重量法計量，準確度高。
Gravimetric dispensing, maximum accuracy & traceability.
- 模組化設計，擴充性佳。
Modular design concept, offers a wide range of differing models, for all market applications.
- 視窗作業，可與其他系統連線，相容性佳。
Windows operating system, easy to link up with other systems.



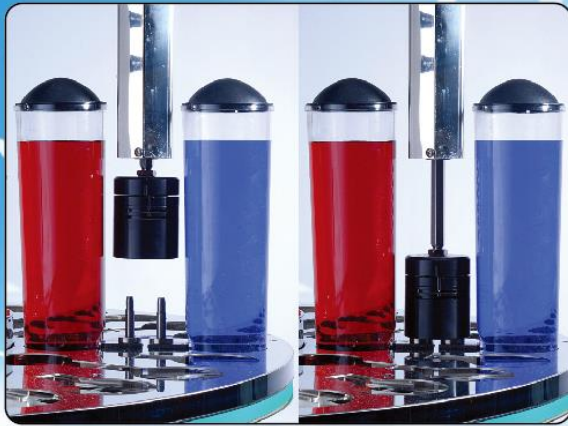
COPOWER - Be Your Power

宏益



專利產品 PATENTED

COPOWER



特殊開閥設計，簡單快速
Special actuator module, high speed dispensing



無管路滴液實況，精確滴液
Tubeless dispensing, high accuracy

新一代無管路滴定機提供您 New MG series provide you:

- ◆ 精密電磁閥，滴液精準穩定。
Precise dispensing valve, with maximum accuracy and traceability.
- ◆ 更換母液容易，不污染，擴充性佳。
Easy to change dye solution, no pollution and good expansion.
- ◆ 不需清洗管路，無管路阻塞之慮，再現性好。
No need for regular cleaning, no block problem, good reproducibility.
- ◆ 不需管路注液，操作方便。
No need for start-up, more convenient for operator and link-up with other systems.
- ◆ 採用視窗作業系統，相容性佳，操作簡單。
Windows operating system, easy to operate.
- ◆ 模組化設計，提供多種組合，更符合您的需求。
Modular design concept, offers a wide range of differing combinations, to cover all possible requirements.
- ◆ 雙轉盤機型，可同時多人操作機台，作業不間斷，大大提高工作效率。
For twin turn-table model, it offers multi-user operation simultaneously, no break in operation, increase the efficiency highly.



CADS MG 36/00
CADS MG 48/00



CADS MG 108/00
CADS MG 132/00
CADS MG 144/00



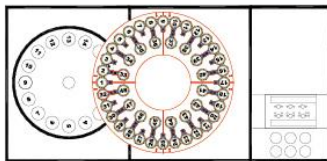
CADS MG 72/00
CADS MG 96/00

規格 Specifications

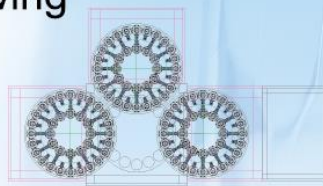
無管路機型 Tubeless Model	CADS MG 36/00	CADS MG 48/00	CADS MG 72/00	CADS MG 96/00	
有管母液瓶數量 Number of tubed valve	0	0	0	0	
無管母液瓶數量 Number of tubeless valve	36	48	36+36	48+48	
總母液瓶數量 Total number of solution bottle	36	48	72	96	
天平數量 Number of dispense scale	2	2	3	3	
染杯杯位 Dye pot position	12(16)	12(16)	12(16)	12(16)	
機台尺寸 Machine dimensions(WxDxH)(mm)	2195x910x1495	2435x1150x1495	2860x910x1495	3340x1150x1495	
機台淨重 Machine net weight(kgs)	530	650	780	990	
無管路機型 Tubeless Model	CADS MG 108/00	CADS MG 132/00	CADS MG 144/00		
有管母液瓶數量 Number of tubed valve	0	0	0		
無管母液瓶數量 Number of tubeless valve	36+36+36	36+48+48	48+48+48		
總母液瓶數量 Total number of solution bottle	108	132	144		
天平數量 Number of dispense scale	4	4	4		
染杯杯位 Dye pot position	12(16)	12(16)	12(16)		
機台尺寸 Machine dimensions(WxDxH)(mm)	2860x1595x1495	3390x1745x1495	3540x2055x1495		
機台淨重 Machine net weight(kgs)	950	1060	1130		
有管+無管路機型 Tubed/Tubeless Model	CADS MG 36/72	CADS MG 36/102	CADS MG 48/72	CADS MG 72/72	CADS MG 72/126
有管母液瓶數量 Number of tubed valve	72	102	72	72	126
無管母液瓶數量 Number of tubeless valve	36	36	48	36+36	36+36
總母液瓶數量 Total number of solution bottle	108	138	120	144	198
天平數量 Number of dispense scale	2	2	2	3	3
染杯杯位 Dye pot position	12(16)	12(16)	12(16)	12(16)	12(16)
機台尺寸 Machine dimensions(WxDxH)(mm)	2575x910x1645	3025x910x1645	2815x1150x1645	2575x1595x1645	3385x1595x1645
機台淨重 Machine net weight(kgs)	770	950	900	980	1100

* 規格變動恕不另行通知 Specifications subject to change without notice

組合示意圖 Layout Drawing



CADS MG 36/00
CADS MG 48/00



CADS MG 108/00
CADS MG 132/00
CADS MG 144/00

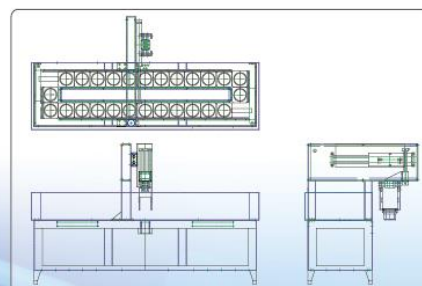


CADS MG 72/00
CADS MG 96/00

選配 Options



染杯供應系統
(Cup Feeder)



上視/側視圖
(Top/Side View)